



**WATTS HOMES
& CONSTRUCTION**
5071 Gull Road | Kalamazoo, MI 49048

269-345-3859
Fax 269-345-1570
www.MyWattsHome.com

Your life... Your home... Your style!



CITY OF PLAINWELL'S VISION MILL SITE REIMAGINED

PRESENTED BY
WATTS HOMES & CONSTRUCTION

MAY 12, 2025



**WATTS HOMES
& CONSTRUCTION**
5071 Gull Road | Kalamazoo, MI 49048

269-345-3859
Fax 269-345-1570
www.MyWattsHome.com

Your life... Your home... Your style!

Bio

Watts Homes & Construction is a small local company that is very diverse in all construction needs from small residential homes and condos to luxury homes, remodeling and commercial construction.

We're confident that if you look into our reputation, you'll find a long history of very happy and satisfied customers in the greater Kalamazoo, area. They've also recommended us to their friends and family. We've worked hard in this industry to ensure the Watts name is synonymous with thoughtfully designed and beautifully crafted homes. We stand behind the work we've done in the past, the present and we won't stop in the future. We've staked our reputation on it.

3 generations of the Watts family have carried on the tradition of building quality homes in our community. We have been building communities within the greater Kalamazoo area for 70 years! We know a house is more than a building; it's your home. It's where your life happens. We are dedicated to making sure your home suits your life. What does that say about us?

- It tells you that for seven decades, our clients have put their trust in us to build their new homes.
- They've gone on to recommend us to their neighbors, friends and family members.
- Many have trusted us to build multiple homes for their families.
- We've also built solid relationships with our suppliers and sub-contractors.
- That kind of longevity lets you know that we have a tremendous amount of experience in understanding what our customers want and need.
- It says we keep our promises.

We deliver quality and value in a home you'll love for years to come. You may choose from a wide variety of residential and condominium designs to suit your taste. Each of our existing home plans can be changed and customized as much or as little as you choose.

We are a real estate developer as well as a home builder. Our company finds and buys land suitable for a project, improves it accordingly, and builds on it. We specialize in residential real estate projects and manage all phases, including neighborhood concept, infrastructure, home design, project marketing and client move-in.



SCALE:
1" = 60'-0"

WATTS HOMES AND CONSTRUCTION

46 CONDOMINIUM UNITS ARRANGED IN 2 TO 4 UNIT BUILDINGS
40 50' x 96' SINGLE FAMILY LOTS

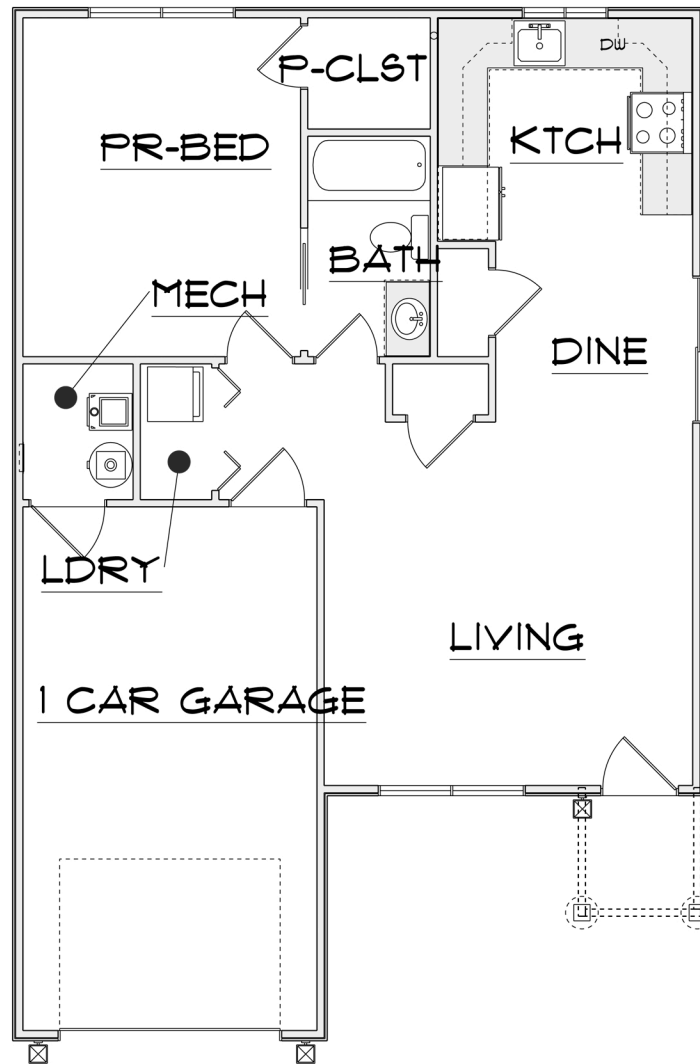
728 - Ranch

728 Sq Ft • 1 Bedroom • 1 Bath • 1-Car Garage



728 - Ranch

728 Sq Ft • 1 Bedroom • 1 Bath • 1-Car Garage



This illustration is an artists' rendering based on Watts Homes & Construction's current proposed development concepts, which continue to evolve & are subject to change without notice. This illustration is not to scale. No guarantee is made that the facilities & features depicted will be constructed or that, if constructed, the number, type, size & location will be as depicted on this illustration. Access to & use of certain areas may be restricted. The common & surrounding properties will undergo continuing growth & development, & conditions within sight may change. This illustration does not show the legal boundaries of the community; please refer to the recorded plats. Because Watts Homes & Construction does not own or control the land outside the boundary of the community, Watts Homes & Construction does not guarantee the accuracy of any matters or conditions shown on this illustration outside the boundary of the community and/or the current or future uses of those properties. © Watts Homes & Construction, Kalamazoo, MI

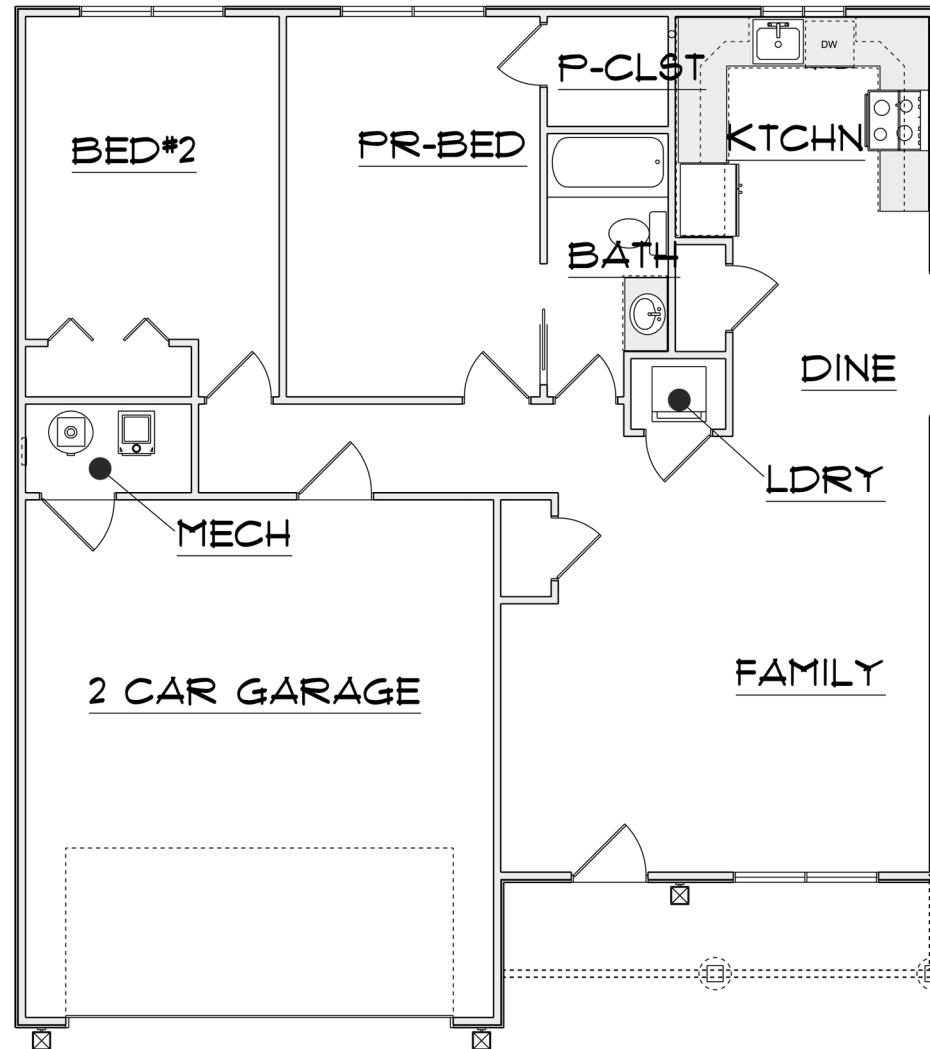
1014 - Ranch

1,014 Sq Ft • 2 Bedrooms • 1 Bath • 2-Car Garage



1014 - Ranch

1,014 Sq Ft • 2 Bedrooms • 1 Bath • 2-Car Garage



This illustration is an artists' rendering based on Watts Homes & Construction's current proposed development concepts, which continue to evolve & are subject to change without notice. This illustration is not to scale. No guarantee is made that the facilities & features depicted will be constructed or that, if constructed, the number, type, size & location will be as depicted on this illustration. Access to & use of certain areas may be restricted. The common & surrounding properties will undergo continuing growth & development, & conditions within sight may change. This illustration does not show the legal boundaries of the community; please refer to the recorded plats. Because Watts Homes & Construction does not own or control the land outside the boundary of the community, Watts Homes & Construction does not guarantee the accuracy of any matters or conditions shown on this illustration outside the boundary of the community and/or the current or future uses of those properties. © Watts Homes & Construction, Kalamazoo, MI

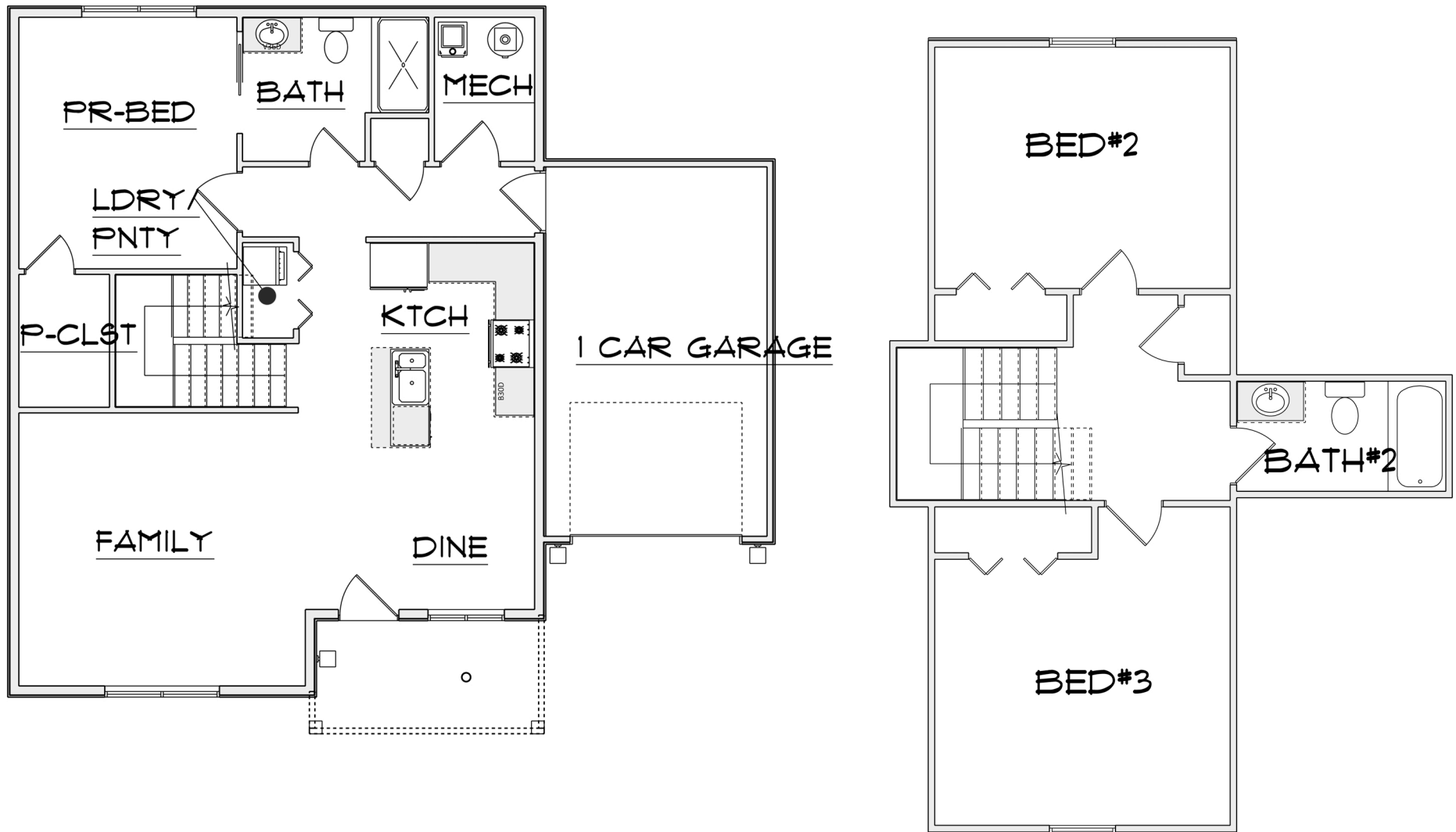
1426 - 1.5 Story

1,426 Sq Ft • 3 Bedrooms • 2 Baths • 1-Car Garage



1426 - 1.5 Story

1,426 Sq Ft • 3 Bedrooms • 2 Baths • 1-Car Garage



This illustration is an artists' rendering based on Watts Homes & Construction's current proposed development concepts, which continue to evolve & are subject to change without notice. This illustration is not to scale. No guarantee is made that the facilities & features depicted will be constructed or that, if constructed, the number, type, size & location will be as depicted on this illustration. Access to & use of certain areas may be restricted. The common & surrounding properties will undergo continuing growth & development, & conditions within sight may change. This illustration does not show the legal boundaries of the community; please refer to the recorded plats. Because Watts Homes & Construction does not own or control the land outside the boundary of the community, Watts Homes & Construction does not guarantee the accuracy of any matters or conditions shown on this illustration outside the boundary of the community and/or the current or future uses of those properties. © Watts Homes & Construction, Kalamazoo, MI

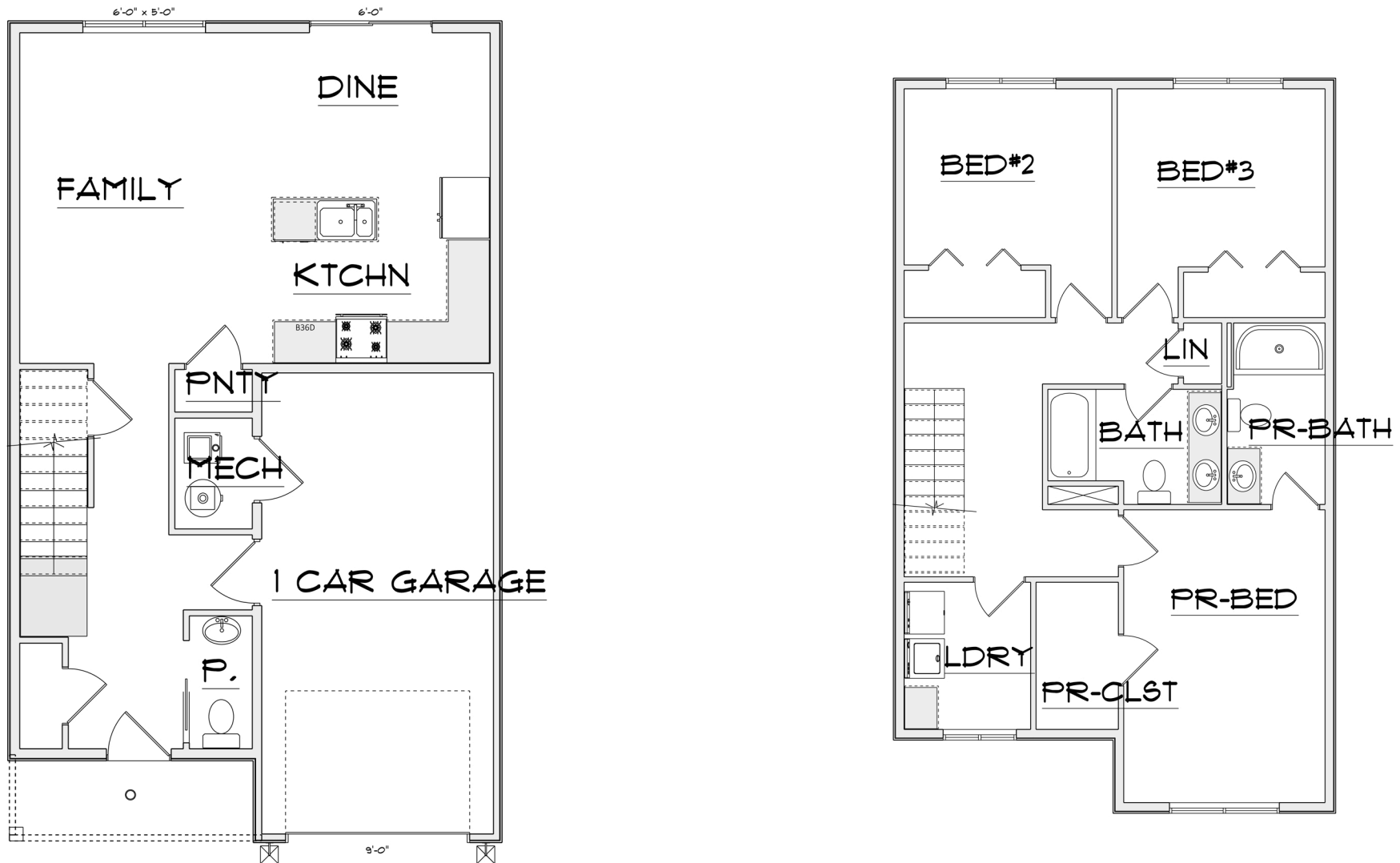
1464 - 2 Story

1,464 Sq Ft • 3 Bedrooms • 2.5 Baths • 1-Car Garage



1464 - 2 Story

1,464 Sq Ft • 3 Bedrooms • 2.5 Baths • 1-Car Garage



This illustration is an artists' rendering based on Watts Homes & Construction's current proposed development concepts, which continue to evolve & are subject to change without notice. This illustration is not to scale. No guarantee is made that the facilities & features depicted will be constructed or that, if constructed, the number, type, size & location will be as depicted on this illustration. Access to & use of certain areas may be restricted. The common & surrounding properties will undergo continuing growth & development, & conditions within sight may change. This illustration does not show the legal boundaries of the community; please refer to the recorded plats. Because Watts Homes & Construction does not own or control the land outside the boundary of the community, Watts Homes & Construction does not guarantee the accuracy of any matters or conditions shown on this illustration outside the boundary of the community and/or the current or future uses of those properties. © Watts Homes & Construction, Kalamazoo, MI

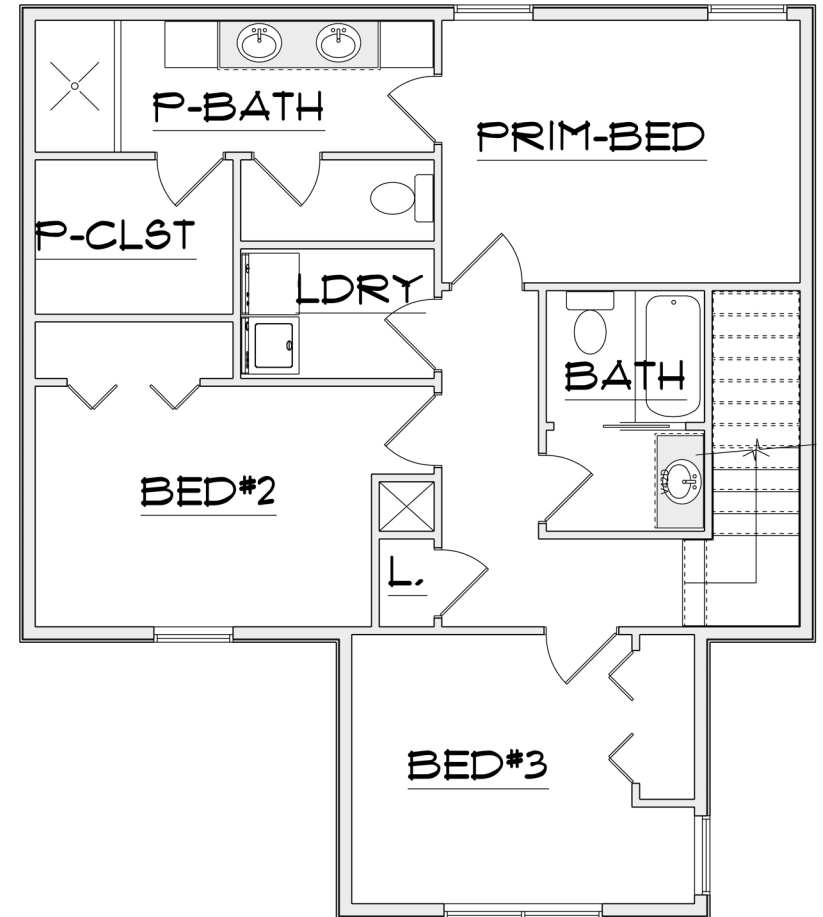
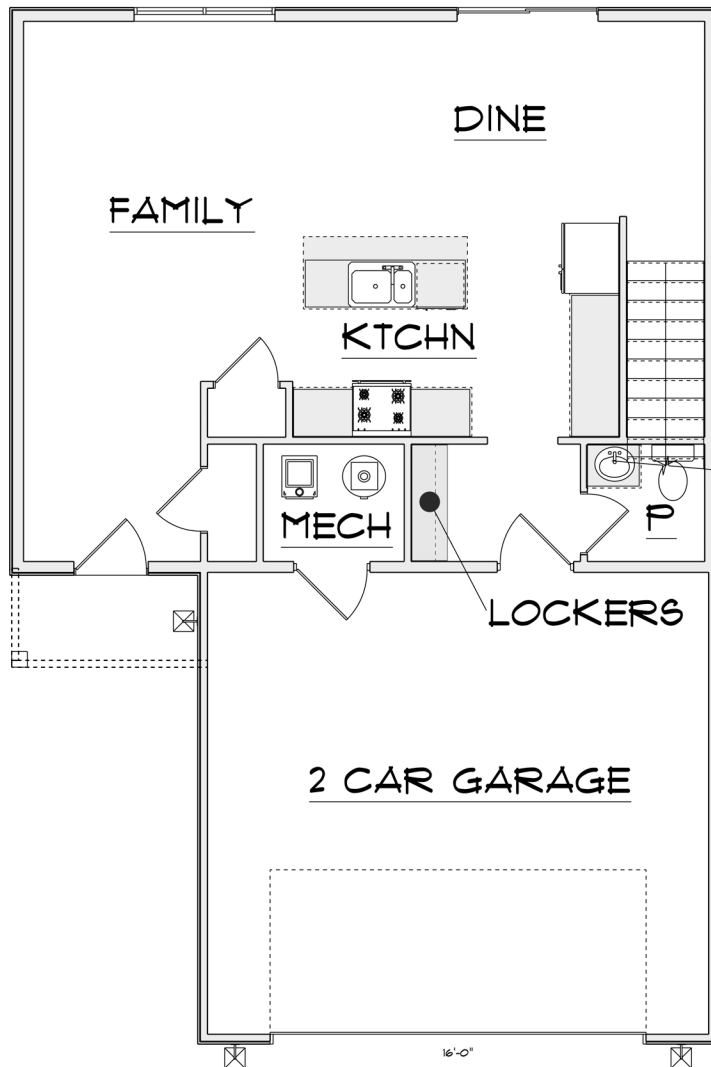
1592 - 2 Story

1,592 Sq Ft • 3 Bedrooms • 2.5 Baths • 2-Car Garage



1592 - 2 Story

1,592 Sq Ft • 3 Bedrooms • 2.5 Baths • 2-Car Garage



This illustration is an artists' rendering based on Watts Homes & Construction's current proposed development concepts, which continue to evolve & are subject to change without notice. This illustration is not to scale. No guarantee is made that the facilities & features depicted will be constructed or that, if constructed, the number, type, size & location will be as depicted on this illustration. Access to & use of certain areas may be restricted. The common & surrounding properties will undergo continuing growth & development, & conditions within sight may change. This illustration does not show the legal boundaries of the community; please refer to the recorded plats. Because Watts Homes & Construction does not own or control the land outside the boundary of the community, Watts Homes & Construction does not guarantee the accuracy of any matters or conditions shown on this illustration outside the boundary of the community and/or the current or future uses of those properties. © Watts Homes & Construction, Kalamazoo, MI

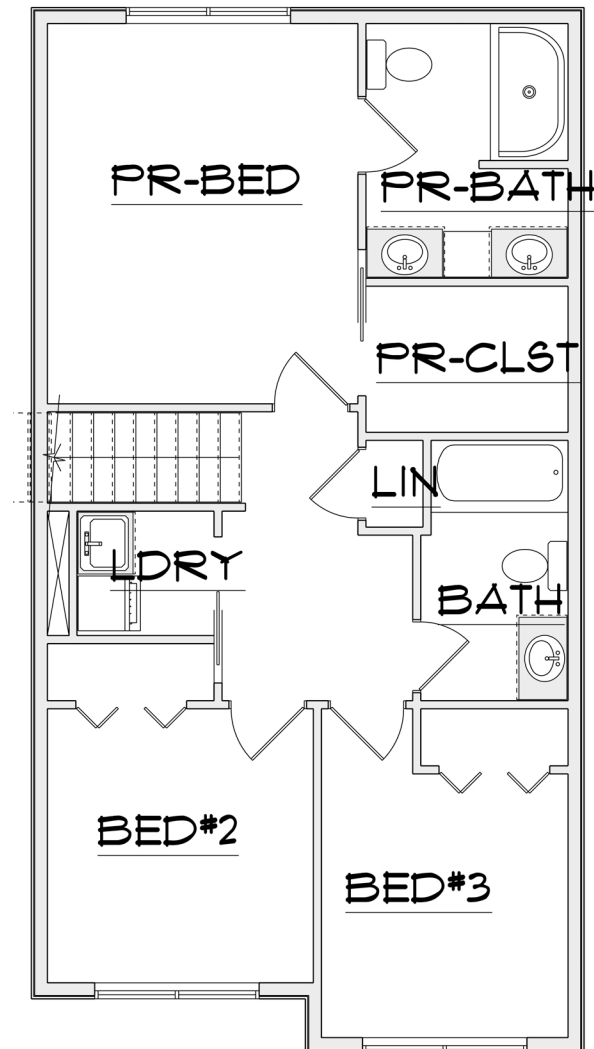
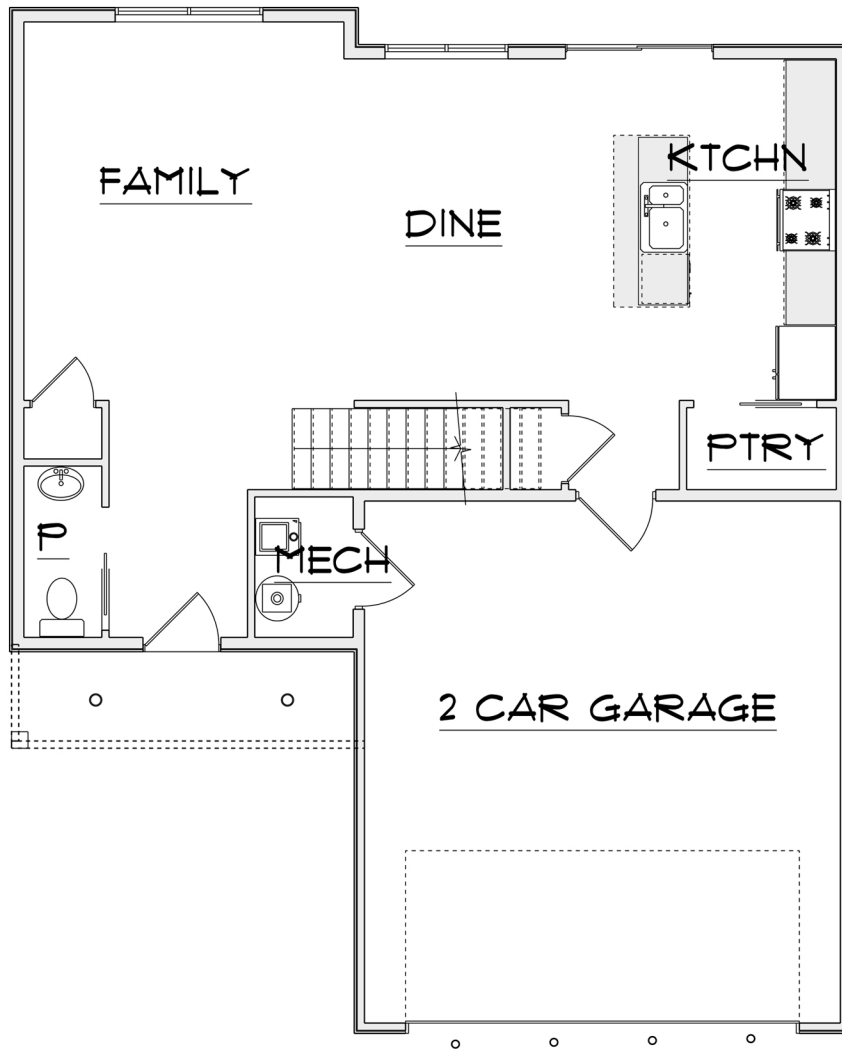
1677 - 2 Story

1,677 Sq Ft • 3 Bedrooms • 2.5 Baths • 2-Car Garage



1677 - 2 Story

1,677 Sq Ft • 3 Bedrooms • 2.5 Baths • 2-Car Garage



This illustration is an artists' rendering based on Watts Homes & Construction's current proposed development concepts, which continue to evolve & are subject to change without notice. This illustration is not to scale. No guarantee is made that the facilities & features depicted will be constructed or that, if constructed, the number, type, size & location will be as depicted on this illustration. Access to & use of certain areas may be restricted. The common & surrounding properties will undergo continuing growth & development, & conditions within sight may change. This illustration does not show the legal boundaries of the community; please refer to the recorded plats. Because Watts Homes & Construction does not own or control the land outside the boundary of the community, Watts Homes & Construction does not guarantee the accuracy of any matters or conditions shown on this illustration outside the boundary of the community and/or the current or future uses of those properties. © Watts Homes & Construction, Kalamazoo, MI

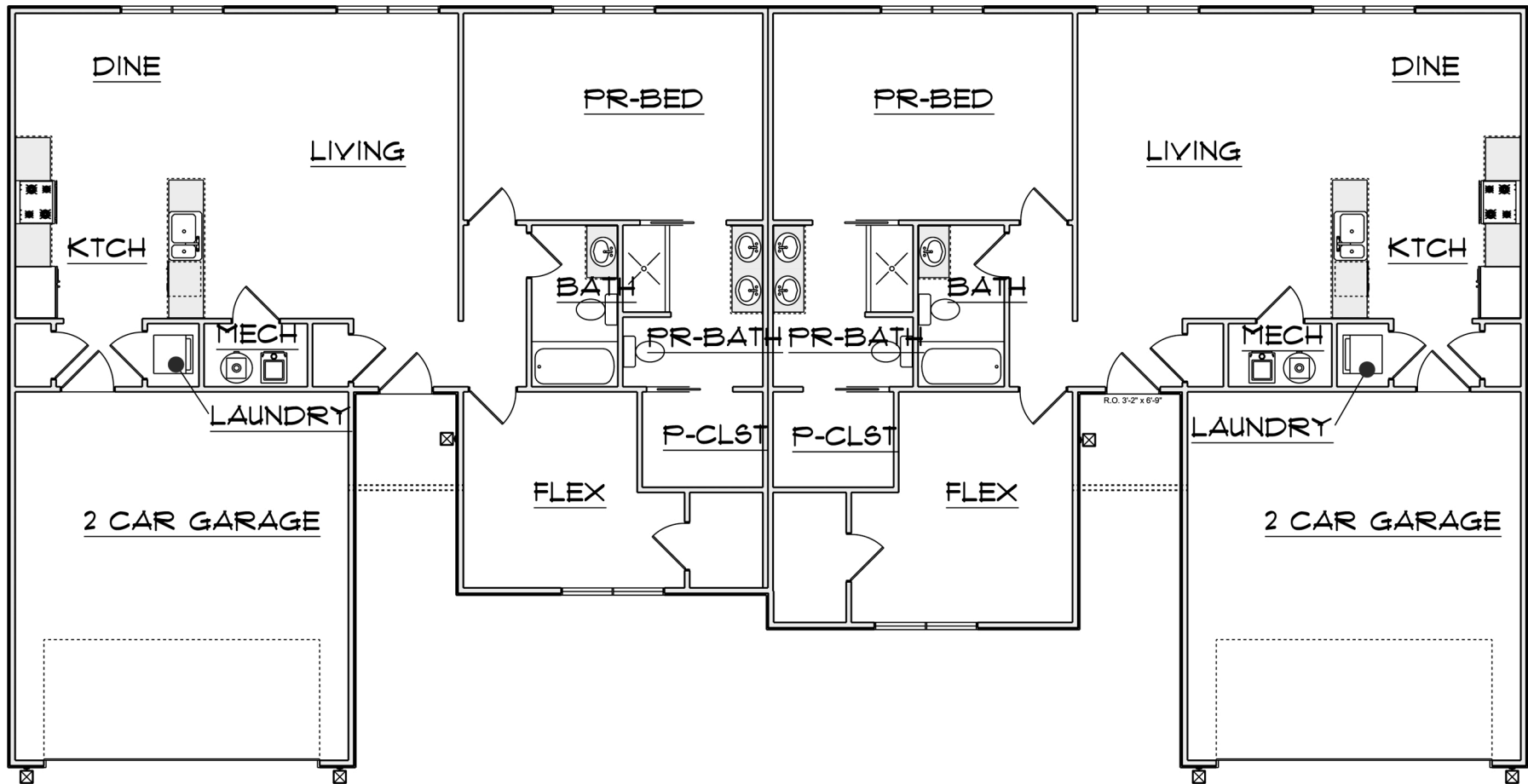
2 Unit Condo - Ranch

1,203 Sq Ft • 2 Bedrooms • 2 Baths • 2-Car Garage Per Unit



2 Unit Condo - Ranch

1,203 Sq Ft • 2 Bedrooms • 2 Baths • 2-Car Garage Per Unit



This illustration is an artists' rendering based on Watts Homes & Construction's current proposed development concepts, which continue to evolve & are subject to change without notice. This illustration is not to scale. No guarantee is made that the facilities & features depicted will be constructed or that, if constructed, the number, type, size & location will be as depicted on this illustration. Access to & use of certain areas may be restricted. The common & surrounding properties will undergo continuing growth & development, & conditions within sight may change. This illustration does not show the legal boundaries of the community; please refer to the recorded plats. Because Watts Homes & Construction does not own or control the land outside the boundary of the community, Watts Homes & Construction does not guarantee the accuracy of any matters or conditions shown on this illustration outside the boundary of the community and/or the current or future uses of those properties. © Watts Homes & Construction, Kalamazoo, MI

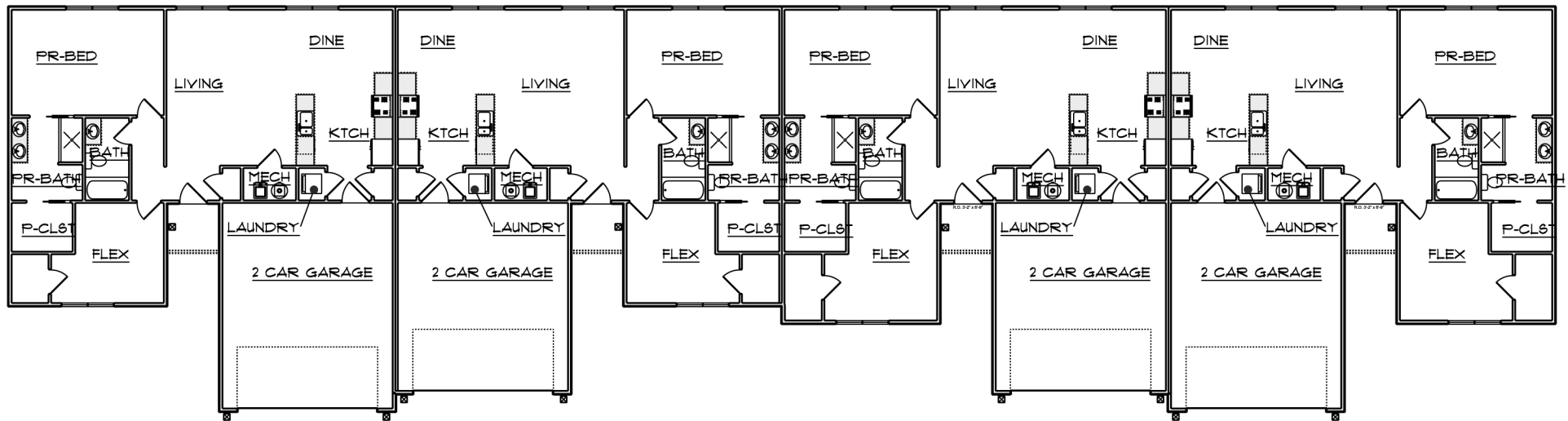
4 Unit Condo - Ranch

1,239 Sq Ft • 2 Bedrooms • 2 Baths • 2-Car Garage Per Unit



4 Unit Condo - Ranch

1,239 Sq Ft • 2 Bedrooms • 2 Baths • 2-Car Garage Per Unit



This illustration is an artists' rendering based on Watts Homes & Construction's current proposed development concepts, which continue to evolve & are subject to change without notice. This illustration is not to scale. No guarantee is made that the facilities & features depicted will be constructed or that, if constructed, the number, type, size & location will be as depicted on this illustration. Access to & use of certain areas may be restricted. The common & surrounding properties will undergo continuing growth & development, & conditions within sight may change. This illustration does not show the legal boundaries of the community; please refer to the recorded plats. Because Watts Homes & Construction does not own or control the land outside the boundary of the community, Watts Homes & Construction does not guarantee the accuracy of any matters or conditions shown on this illustration outside the boundary of the community and/or the current or future uses of those properties. © Watts Homes & Construction, Kalamazoo, MI